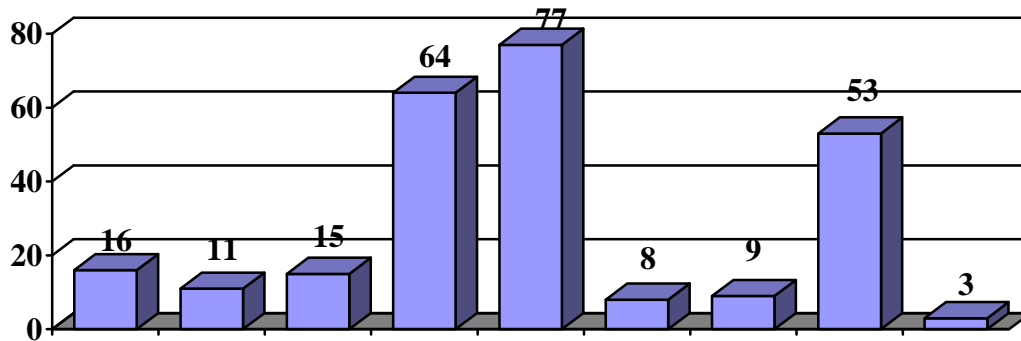


2016-2017

2016/17 128 9- 65 11-
 . 1 9 3 11 .
 . (9)
 . 9
 (ó , ó
)
) 8

8 (11-)
 « » 8
 « ».
 9
 62 (9 (2)
 ó 127 , ó 1 .)
 :

	- . "	- . "	" .
	128	1	100%
	128	1	100%
	9		7%
	77		60%
	8		6%
	16		13%
	11		9%
	3		2%
	53		41%
	64		50%
	15		12%



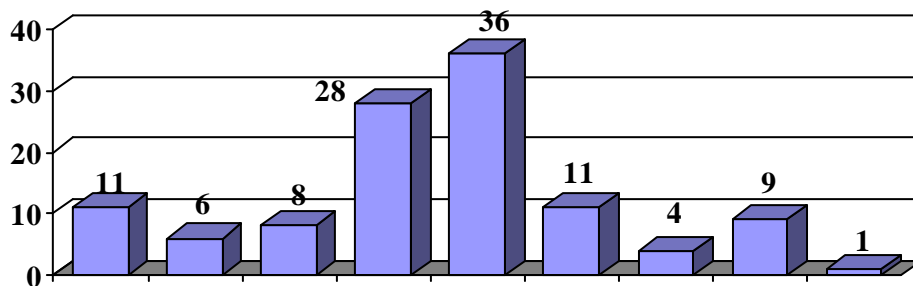
	-	% -
	129	70%
	129	83%
	9	89%
	77	60%
	8	75%
	16	63%
	11	73%
	3	100%
	53	70%
	64	84%
	15	33%

(33%).

90 (70%).

12

	- () (%) . 11	- () (%) . 10
	68 . (100%)	
()	50 . (74%)	50 . (48%)
()	41 . (60%)	
	4 . (6%)	
	11 . (16%)	
	6 . (9%)	
	8 . (12%)	
	1 . (1%)	1 . (1%)
	11 . (16%)	
	36 . (53%)	
	28 . (41%)	
	9 . (13%)	



()

,

,

,

:

	ô	Max
	41	76
	68	100
	36	88
	9	84
	11	93
	28	92
	8	92
	1	65
	4	69
	11	76
	6	67

, 190 219 , 13 (19%);
220 6 24 (35%).